

TD1220RDR Installation Notes for the TD-12 and TD-20

Please read carefully as there are several areas that require close attention when installing to avoid damage to the drum module and/or the TD1220RDR display.

It is recommended to have a qualified technician perform this installation using electronic anti-static handling protocols.

This is a replacement electronic component. This device was tested several times before shipment to ensure it is operating nominally and is free from manufacturing defects. The item is warranted to be free from manufacturing defects upon receipt. The warranty does not cover issues relating to handling or installation or use for anything other than its intended purpose. Warranty returns must be approved and accompanied by an RMA number.

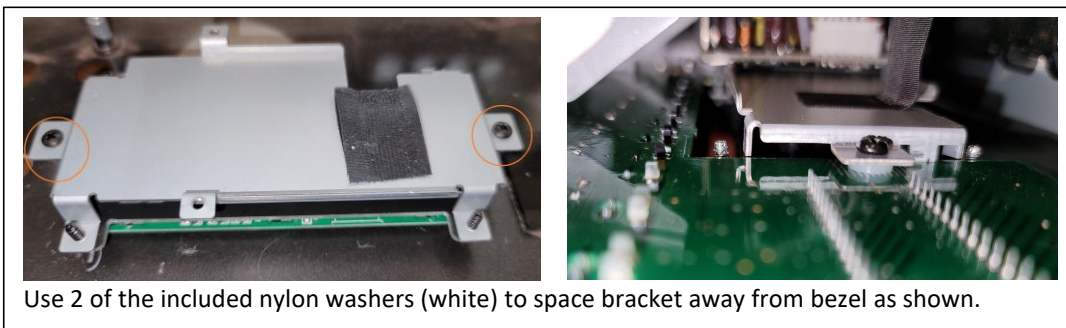
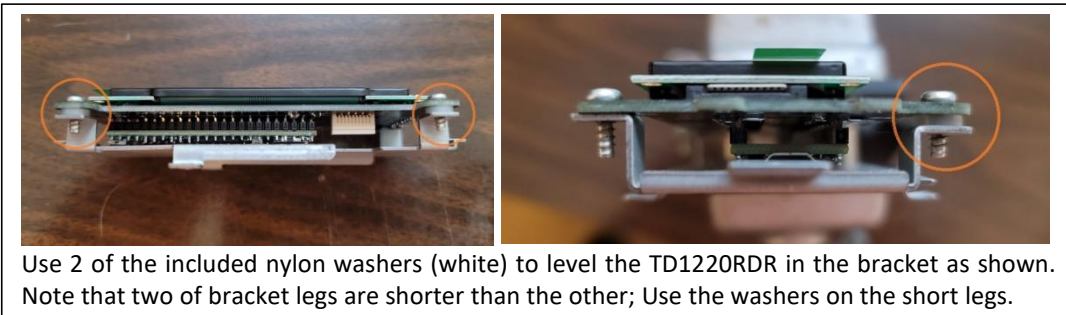
Be very careful dealing with the ribbon cables in the module. They are old and fragile. It is possible to have the contact fingers of the cable delaminate from the cable backing when removing or inserting the cables. A new 10 conductor ribbon cable (display) is included for your convenience.

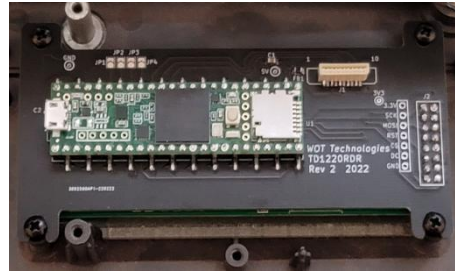
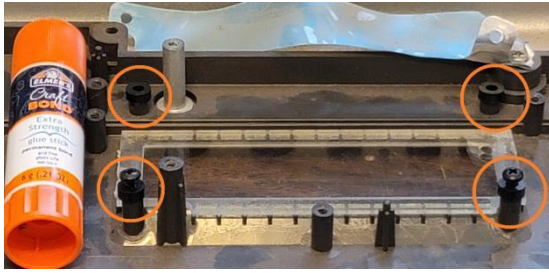
The TD1220RDR OLED display is slightly smaller than the factory LCD display. The window (bezel) may allow the outside edges of the OLED display module to show in the window if there is enough ambient light to illuminate it. A self-adhering, "intermediate bezel" is included that can be carefully applied to the OLED panel display frame. This intermediate bezel works really well to improve the overall appearance but as it is cosmetic, it is completely optional.

The TD1220RDR OLED display uses mounting slots to allow the installer to place the display precisely in the viewing window as desired. Centering the screws in the center of the slots will also place the display approximately in the center of the viewing window.

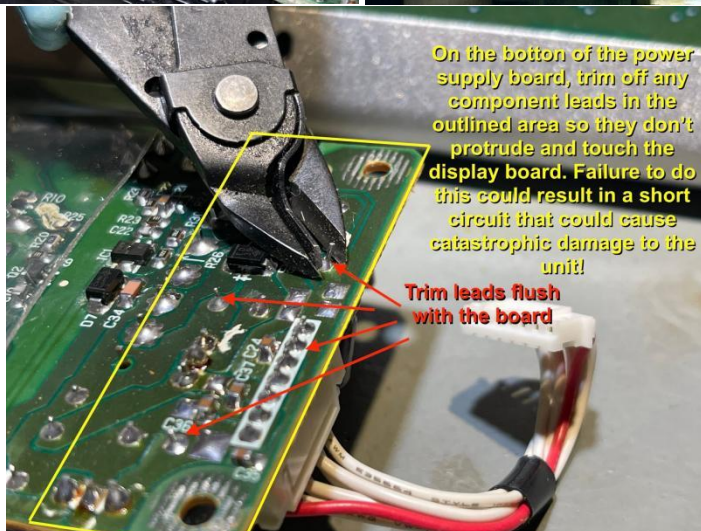
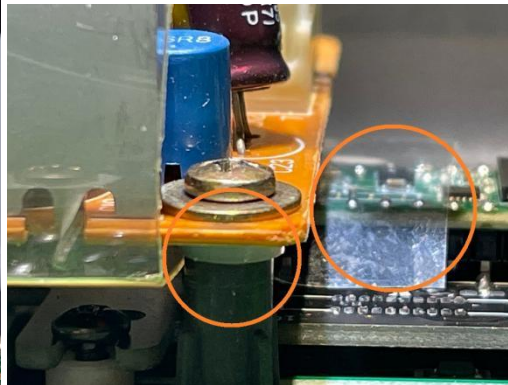
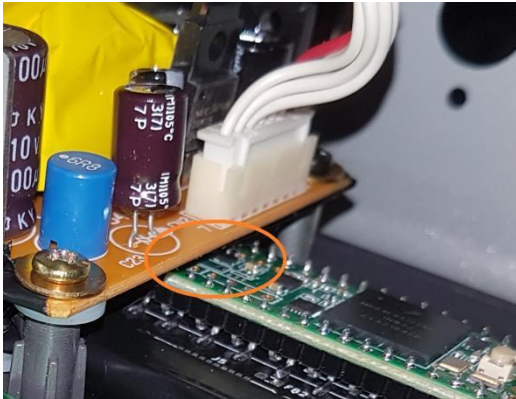
The display brightness is adjustable through the TD-12 or TD-20 contrast control. The contrast adjustment, as used with the factory LCD display, is probably set to a middle range which equates to about half-brightness of the new OLED display. If the display seems too dim or too bright, you can adjust to your preference. (Tip: You can hold down the "Kit" button while turning the "Value" knob to adjust the contrast)

TD-12 Special Considerations:



TD-20 Special Considerations:

Use 4 of the included ABS spacers (black) to space TD1220RDR away from bezel as shown. You can use craft paste (or other light adhesive) to hold upper two spacers in place during assembly. The lower two spacers can be held in place with screws since TD1220RDR uses open slots for lower two mounting points.



On the bottom of the power supply board, trim off any component leads in the outlined area so they don't protrude and touch the display board. Failure to do this could result in a short circuit that could cause catastrophic damage to the unit!

Trim leads flush with the board

IMPORTANT! The clearance between the top of the TD1220RDR and the bottom of the TD-20 power supply is very tight and it is possible that electrical connections from each could short, causing catastrophic damage to the TD1220RDR or the TD-20. You can easily resolve this by some combination of the following: 1.) trimming the component leads from the affected area flush with bottom of PC board, 2.) taping an insulator between the affected areas of the power supply and the TD1220RDR (the protective film from the OLED display works well for this), and 3.) use the remaining nylon washers under the power supply board at the mounting points to elevate it up and away from the TD1220RDR. **Please double and triple check this clearance to ensure that no short circuits can take place.**

Thank you for purchasing the TD1220RDR and we sincerely hope that you enjoy the new life you've just given to a great sound module. Please check <https://www.wottechnologies.com> for installation updates and tutorials.